

3 Quad LED Cobra Head

The better, brighter light fixture



FEATURES

Ideal for roadway, street lighting, Intersections, parking lots, boat ramps, gates, perimeter security, parks, outside storage areas, and other general area lighting applications.

Super efficient, bright, white light, state of the art LED light source; most efficient white light source in its wattage range. Excellent color rendering optimizes human visual acuity and contrast, offering best in class night-time (scotopic) vision.

IDA Dark Sky compliant; maximizes light utilization, providing a uniform light pattern with concentrated light where it is needed and low light pollution outside of light distribution field. No skyward pollution

No risk of hazardous disposal – unlike CF, CCFL, LPS and HPS which contain mercury.

“Instant-on” – no warm up or cold start issues. Starting and re-igniting period: less than 100 milliseconds.

Significantly less energy and maintenance costs with reduced greenhouse gas emissions.

Luminaire provides condensation prevention and adequate ventilation.

SPECIFICATIONS

LED Type	Strip Type / 100,000 Hours
LED Total Power	45 watts
Dimensions	Lens Diameter – nominal 12.0 in. Height, without lens – 5.0 in. Height, including lens – 8.0 in. Length – 27.0 in. Max Width – 13.5 in.
Weight	15.0 lbs.
LED Enclosure	Water tight, sealed, dust and insect free
Power	12V to 40V DC or 80VAC to 277VAC, 50.60 Hz
LED Driver Efficiency	81% @ 12V / 91% @ 24V / 95% @ 40V
Luminous Efficacy	80 Lumens per watt
Color Temperature (CCT)	5100K
LED lumens per LED watt	3228@45W
Operating Temperature (Amb.)	-40 F to 120 F
Housing	Die cast corrosion resistant electroplated aluminum
Lens	Prismatic (Dome) or Sag
Suggested Mounting Height	18 to 35 feet
Mounting Hardware	Standard: 2” Sch. 40, pipe



Reliable. Renewable. Remarkable.



LOVIN THE POWER
www.ecogise.co.nz

3 Quad LED Light Fixture

The better, brighter cobra head

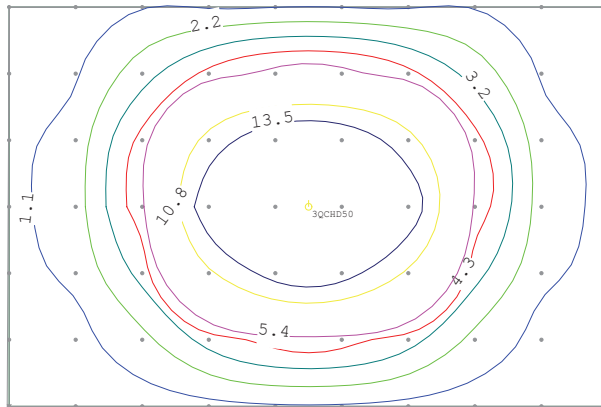


Photometric Template 3Q DOME LED Fixture @ 20 Feet

EPA (Estimated Projected Wind Area): 0.9 sq. ft.

Typical Grid: Horizontal Illuminance Statistics

Ave: 0.39 fc	Max/Min: 122.52
Max: 2.28 fc	Ave/Min: 20.81
Min: 0.02 fc	Std. Dev.: 0.53



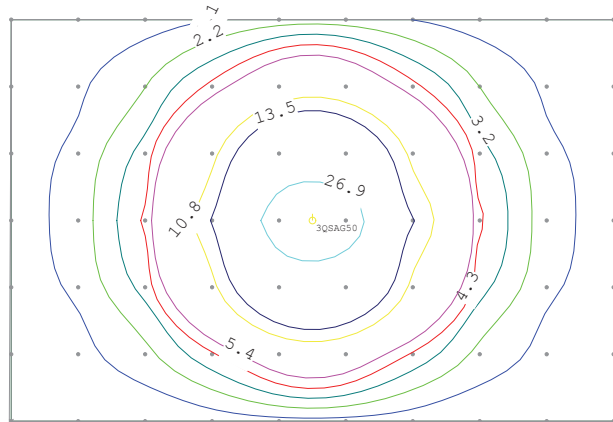
60 x 90 Foot Grid
(18.29 x 27.43 Meter Grid)

Photometric Template 3Q SAG LED Fixture @ 20 Feet

EPA (Estimated Projected Wind Area): 0.7 sq. ft.

Typical Grid: Horizontal Illuminance Statistics

Ave: 0.42 fc	Max/Min: 581.12
Max: 2.96 fc	Ave/Min: 82.89
Min: 0.01 fc	Std. Dev.: 0.66



60 x 90 Foot Grid
(18.29 x 27.43 Meter Grid)



22 Quarantine Road, Annesbrook
 PO Box 1373 | Nelson 7040 | New Zealand
 Ph: 0800 4 326 4473 | Fx: 03 547 1324
www.ecogise.co.nz