

2 Quad LED Cobra Head

The better, brighter light fixture



FEATURES

- Ideal for roadway, street lighting, Intersections, parking lots, boat ramps, gates, perimeter security, parks, outside storage areas, and other general area lighting applications.
- Super efficient, bright, white light, state of the art LED light source; most efficient white light source in its wattage range. Excellent color rendering optimizes human visual acuity and contrast, offering best in class night-time (scotopic) vision.
- IDA Dark Sky compliant; maximizes light utilization, providing a uniform light pattern with concentrated light where it is needed and low light pollution outside of light distribution field. No skyward pollution
- No risk of hazardous disposal – unlike CF, CCFL, LPS and HPS which contain mercury.
- “Instant-on” – no warm up or cold start issues. Starting and re-igniting period: less than 100 milliseconds.
- Significantly less energy and maintenance costs with reduced greenhouse gas emissions.
- Luminaire provides condensation prevention and adequate ventilation.

SPECIFICATIONS

LED Type	Strip Type / 100,000 Hours
LED Total Power	30 watts
Dimensions	Lens Diameter – nominal 12.0 in. Height, without lens – 5.0 in. Height, including lens – 8.0 in. Length – 27.0 in. Max Width – 13.5 in.
Weight	15.0 lbs.
LED Enclosure	Water tight, sealed, dust and insect free
Power	12V to 40V DC or 80VAC to 277 VAC, 50.60 Hz
LED Driver Efficiency	81% @ 12V / 91% @ 24V / 95% @ 40V
Luminous Efficacy	80 Lumens per watt
Color Temperature (CCT)	5100K
LED Lumens per LED Watt	2152@30W
Operating Temperature (Amb.)	-40 F to 120 F
Housing	Die cast corrosion resistant electroplated aluminum
Lens	Prismatic (Dome) or Sag
Suggested Mounting Height	18 to 35 feet
Mounting Hardware	Standard, 2” Sch. 40, pipe

Sol[®]

Reliable. Renewable. Remarkable.

ecogise[™]
LOVIN THE POWER

www.ecogise.co.nz



2 Quad LED Light Fixture

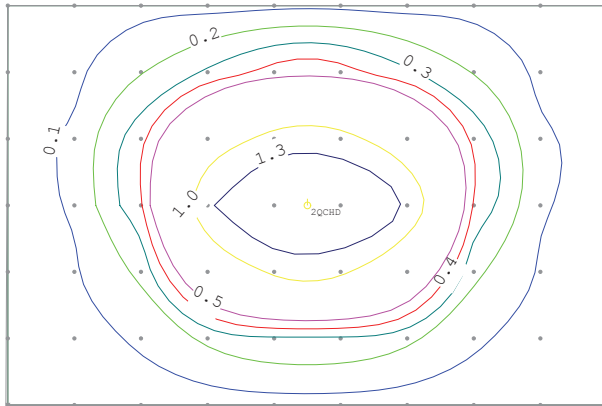
The better, brighter cobra head



Photometric Template 2Q DOME LED Fixture @ 20 Feet

EPA (Estimated Projected Wind Area): 0.9 sq. ft.

Typical Grid: Horizontal Illuminance Statistics
 Ave: 0.29 fc Max/Min: 127.47
 Max: 1.65 fc Ave/Min: 22.59
 Min: 0.01 fc Std. Dev.: 0.40

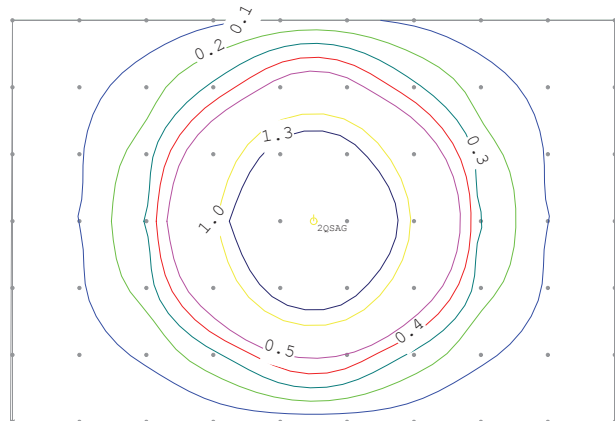


60 x 90 Foot Grid
(18.29 x 27.43 Meter Grid)

Photometric Template 2Q SAG LED Fixture @ 20 Feet

EPA (Estimated Projected Wind Area): 0.7 sq. ft.

Typical Grid: Horizontal Illuminance Statistics
 Ave: 0.32 fc Max/Min: Undefined
 Max: 2.26 fc Ave/Min: Undefined
 Min: 0.00 fc Std. Dev.: 0.50



60 x 90 Foot Grid
(18.29 x 27.43 Meter Grid)



22 Quarantine Road, Annesbrook
 PO Box 1373 | Nelson 7040 | New Zealand
 Ph: 0800 4 326 4473 | Fx: 03 547 1324
www.ecogise.co.nz